

65 SERIES

SupaClean Housing



The **65 Series** housing range is designed to accommodate the **SupaClean** filter assembly with 1, 3 or 7 filter cartridges stacks up to 30" long. These top-opening housings are secured with Vee clamps or Swingbolt sets and are suitable for pressures up to 10 bar g in liquids with temperatures up to 70° C.

The housings are floor mounted but have the option of a cradle assembly for easier operation. The **SupaClean** filter assemblies locate via the top entry, with the inlet and outlet located in the Top Cover, and are all equipped with a purge point for easy removal after usage.

Using the **SupaClean** assembly eliminates all fluid contact with the housing. As a result, it allows this to be a truly multipurpose vessel with minimal clean downs and zero corrosion potential, promoting quick and easy operation.

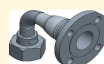
When equipped with the **SupaClean** assembly, the **65 Series** can be used with most cartridges from the Amazon range, including the **SupaSpun**, **SupaPleat** and **SupaPore** options.

Product Features

- Equipped with a purge point for easier assembly removal after usage.
- Top opening style secured with V-Clamp
- No loose internals within the housing
- Available in a range of connection sizes and cartridge lengths
- Compliant with PED and ATEX standards

Accessories

Flanged elbow assembly, ANSI150# or EN1092-1 PN16



Hygienic elbow assembly, Tri Clamp BS4825-3



Inlet & outlet adapter sizing table (Sets of 2)

Size Of Connection	Triclover to BS4825-3				Flange EN1092 or ANSI 150			
	3/4"	1"	1 1/2"	2"	1/2"	1"	1 1/2"	2"
Single Cartridge	✓	✓	✗	✗	✓	✓	✗	✗
3 Round	✗	✓	✓	✗	✗	✓	✓	✗
7 Round	✗	✗	✓	✓	✗	✓	✓	✓

*Costing available on request



Features and Benefits

- Compatible with a wide range of Amazon cartridge filters, including SupaSpun, SupaPleat, and SupaPore models.
- Designed for easy assembly and to be operator-friendly, with no loose internals.
- Fluid contact-free operation eliminates the need for cleaning.
- User-friendly lid for effortless usage and maintenance.
- Enables quick and efficient filter changes, boosting productivity.
- Minimizes operator's exposure to fluid contact, ensuring operator safety.
- Reduces the risk of cross-contamination of process fluids, enhancing product quality.
- Environmentally conscious design minimizes contamination to both the operator and the surrounding environment.
- Each housing is etched with a unique serial number for full traceability

Product Range

Amazon Filters design and manufacture an extensive range of liquid filtration systems, providing one of the widest selections of filtration vessels, depth filters and pleated cartridges available today, ensuring excellent process and filter compatibility. As one of Europe's leading manufacturers of filtration systems, Amazon Filters is able to offer a solution to meet all filtration requirements. Amazon's filters are manufactured in clean room conditions and all products come with detailed Product Validation Guides and Technical Support documentation.



AMAZON

65 Series Technical Data

Max Operating Conditions

Liquids: Bolted closure:
Gas: Bolted closure:
Temperature range:

6501

10 bar g

N/A

0°C / 70°C

6503

10 bar g

N/A

6507

10 bar g

N/A

Materials of Construction

Body: 304L St.Steel
Closure: V-Clamp (6501)
Flat cover with Swing Bolts (6503/6507)
Vessel Finish: Bead Blasted

Connections

Inlet / Outlet: **6501** ½" BSPT Male to ISO .10226
6503 1" BSPT Male to ISO .10226
6507 1¼" BSPT Male to ISO .10226
Purge: ¼" BSPF + BSPT Plug ½" BSPF + BSPT Plug ½" BSPF + BSPT Plug

PED/PESR Status:

* Pressure Equipment Directive

** Pressure Equipment (Safety) Regulations No. 1105

Compliant with PED 2014/68/EU and PESR 2016 No. 1105

Fluid Groups:

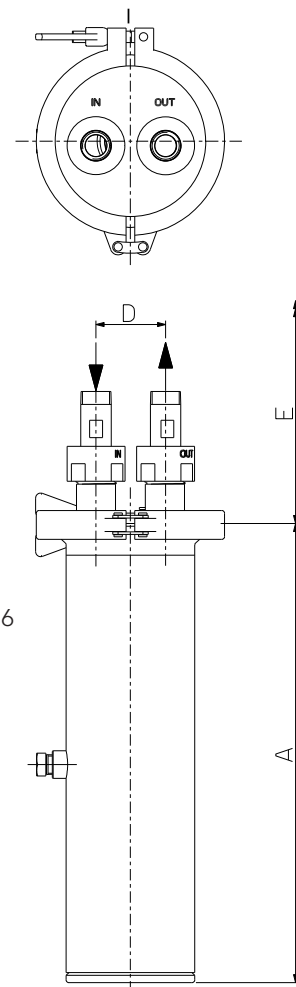
Liquids Group 1

Marking:

Exceptions: CE
Group 1 liquids - Explosive

ATEX:

Compliant with 2014/34/EU and Explosive Atmosphere Regulations 2016
II 2G Ex h IIC T70 Gb
II 2D Ex h IIIC T70 Db



Technical drawings for each individual housing showing dimensions, volume, weights, maximum temperatures and design pressures available on request.

Ordering Guide

6501	1	K	D	N	05	A	2	B	N
No of Stacks	Cartridge Length	Cartridge End Cap Style	Closure Style	Mounting	Connection	Connection Type	Materials	Finish	Seal
6501 - 1 6503 - 3 6507 - 7	0 - Single 5" (6501 only) 1 - Single 10" 2 - Double 20" 3 - Triple 30" (6503 & 6507 only)	K - SupaClean	D - Flat cover with Swing Bolts 6503 & 6507 only) V - V-Clamp (6501 only)	N - None	05 - ½" (6501) 10 - 1" (6503) 12 - 1 ¼" (6507)	A - BSPM	2 - 304L st.st	B - Bead blast all over	N - None

Example: 65011KVN05A2BN = 65 Series, 1 x 10" DOE cartridge, Flat cover with V-clamp, 1/2" connections. 304L St.Steel construction No seal, Bead Blast all over.

AMAZON FILTERS LTD.

Albany Park Estate, Camberley, Surrey, GU16 7PG, ENGLAND

Tel: +44 (0) 1276 670 600 Email: sales@amazonfilters.co.uk Web: www.amazonfilters.com