

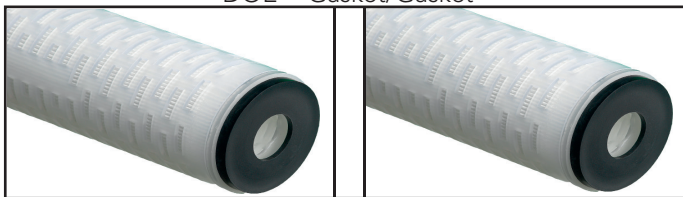
Standard Range End Caps



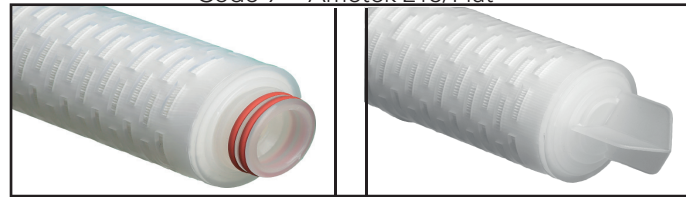
DOE = Gasket/Gasket



Code 9 = Ametek 213/Flat



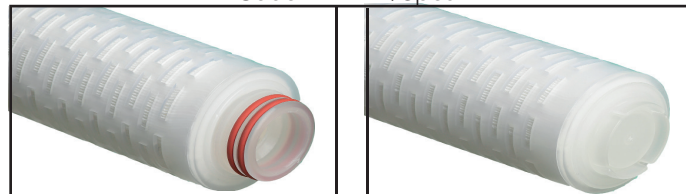
Code 0 = Seal/Seal



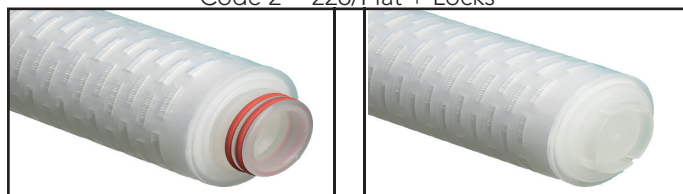
Code A = 224/Spear



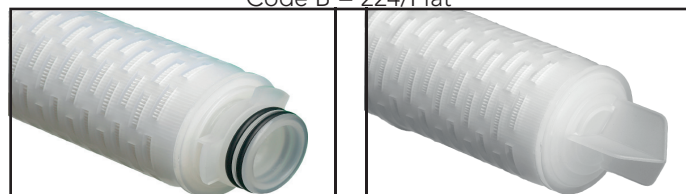
Code 2 = 226/Flat + Locks



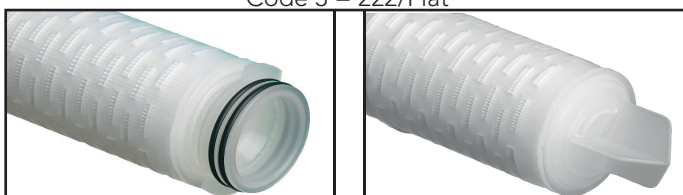
Code B = 224/Flat



Code 3 = 222/Flat



Code S = 222/Spear + Locks



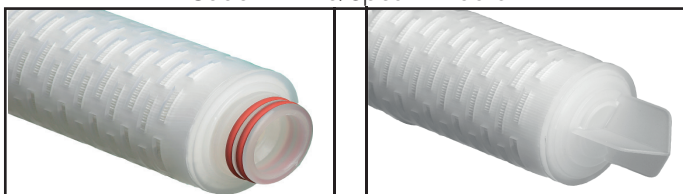
Code 7 = 226/Spear + Locks



Junior True Seal



Junior Closed End



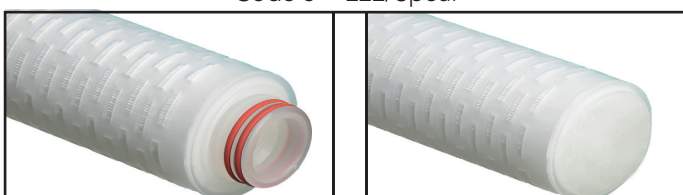
Code 8 = 222/Spear



Junior MCY4463



Junior 1/2" BSPM



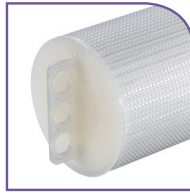
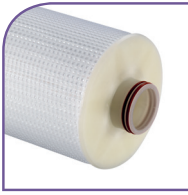
Code 4 = 222/Flat



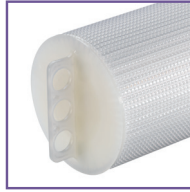
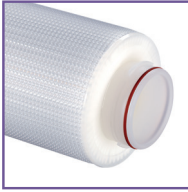
Junior - Millidisc



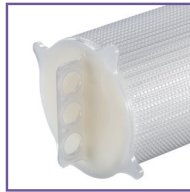
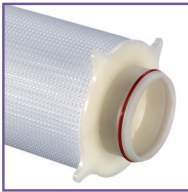
High Flow FFC End Caps



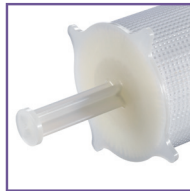
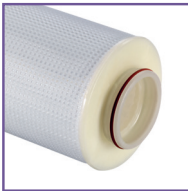
Code E – FFC Double O ring with closed lifting end lifting handle (39" length only) (740 alternative)



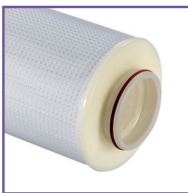
Code F – FFC Single O ring with closed end lifting handle (40 & 60" only) (HiFlow alternative)



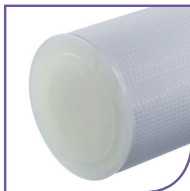
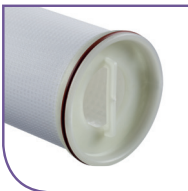
Code G – FFC Single O ring on extended spigot with closed end lifting handle



Code H – FFC Single O ring with closed end lifting rod (27 & 6601 Series only) (Amazon code)



Code P – FFC Single O ring with closed end lifting handle (66 Series multi housing only) (Amazon code)



Code C – HFC Single O ring with closed end (HFC only). (HFU alternative)



AMAZON