

# 27 SERIES GRP



27 SERIES GRP

## High Flow GRP Filter Housing



With water resources becoming less readily available, the use of larger and larger scale water treatment systems is increasing. Where extraction and purification of brackish and seawater is required the use of standard 304 or 316 stainless steel housings is not normally recommended. To help operators overcome these problems Amazon Filters has developed a filtration system comprising of a **27 SERIES GRP** (Glass Reinforced Plastic) housing available in various lengths, and the large diameter **SUPAPLEAT FFC** high flow filter. Where flow rates are high the use of a high surface area cartridge provides a more cost effective solution than standard 65mm diameter filters. This system has been specifically designed to reduce filtration costs associated with water purification.

The **27 SERIES GRP** housing consists of a GRP polymeric body with super duplex stainless steel connections. Housings are designed so that flow through the cartridge is optimized in 'out to in' mode and the robust construction provides a maximum operating pressure of 16 bar and maximum operating temperature of 45° C.

The external surface is painted and coated to provide protection from UV light damage.


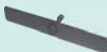
### Industries and Applications

- Membrane protection in desalination plants and other industrial water purification systems
- Capture of carbon particles shed from dechlorination systems
- Control of resins downstream of deionization columns
- General particulate removal

### Filter Cartridge

Amazon Filters manufactures **SUPAPLEAT FFC** cartridges to be used with the **27 SERIES GRP** housing. The range of large diameter **SUPAPLEAT FFC** filters are specifically designed to reduce filtration costs in water purification. Utilising advanced pleated meltblown polypropylene media and an optimised pleat pack design has produced a very high surface area cartridge offering high flow rates and long filter life.



Accessories	Part Number
Saddle and Strap Set 	27S010H00
Extraction Tool 	27S010H03

## 27 SERIES GRP FEATURES AND BENEFITS

- Design allows high flow rates minimising filtration costs and change-out times
- Available in lengths of up to 60" so suitable for high flow systems
- Suitable for brackish and salt water providing more cost effective option than superduplex or lined housings
- PED Compliant
- Design based upon standard RO membrane tubes so can be installed easily into water treatment systems

# 27 SERIES GRP

## TECHNICAL DATA

### Maximum Operating Conditions

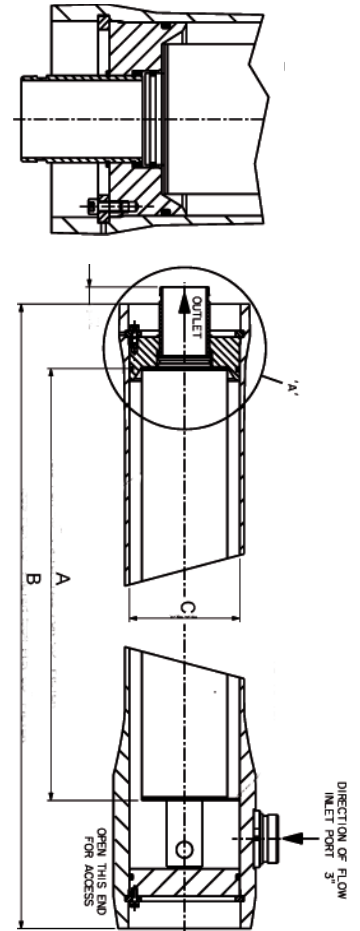
Maximum Pressure: 16 bar g  
 Temperature Range: 45°C

### Materials of Construction

Body: Glass reinforced plastic  
 End fittings: Super duplex stainless steel  
 Seal: Silicone

Model	Dimensions			Volume (Litres)	Dry Weight
	A	B	C		
20"	516	896	264	16	23kg
40"	1019	1384	202	32	27kg
60"	1522	1787	202	48	31kg

**PED Status:** Compliant with 97/23/EC  
**Fluid Groups:** Liquids Group 2  
**Marking:** SEP (Sound Engineering Practice)



## AMAZON FILTERS LTD.

ALBANY PARK ESTATE, FRIMLEY ROAD,  
 CAMBERLEY, SURREY, GU16 7PG  
 ENGLAND

**Tel: +44 (0) 1276 670 600**

**Fax: +44 (0) 1276 670 101**

**Email: sales@amazonfilters.co.uk**

**Web: www.amazonfilters.com**



Certificate No. FM39584

Distributed by: