

# 66 SERIES

AMAZON

## HIGH FLOW LIQUID AND GAS HOUSING

The **66 SERIES** housing range is specifically designed for use with the large bore **SUPAPLEAT HFC** cartridge to provide a filtration system that offers maximum efficiency, high flow rates and long life. This high quality electropolished 316L stainless steel housing is easy to use and is suited to many filtration processes across a range of industries. Available in a selection of sizes and with a choice of connections and closure types the optimum housing can be provided for each application.

The **66 SERIES** housing is available to be used with 20", 40" or 60" cartridges. It can be installed in either the vertical or horizontal position and can be supplied with fixed or adjustable legs. This ensures that the housing can normally be used even where space or changes to inlet and outlet pipework are limited.

### Product Features

- Designed for high flow systems
- Multi cartridge units available up to 30 round
- Easy and quick cartridge change-out
- Electropolished inside and out
- Available for 20", 40" or 60" filters
- Each housing is hydrostatically pressure tested
- Available with 3" or 4" connections and in a range of types
- Can be supplied with adjustable or fixed legs where required
- Rated at 10 bar g liquid, 3 bar g gas
- PED and ATEX Compliant



### Accessories

Pressure Gauge and Vent Valve Kit



Pressure Gauge and Auto Vent Valve Kit



Ball Valve and Nipple



## 66 SERIES FEATURES AND BENEFITS

- Designed for use with the **SUPAPLEAT HFC** cartridge for maximum flow rates
- Utilises large bore cartridge allowing quick and easy filter change out
- Can be used vertically or horizontally with or without legs
- Flexible design allows use of either V band or Rathmann clamp closure
- Full housing customisation service available

66 SERIES

## TECHNICAL DATA

### Maximum Operating Conditions

Pressure Range: Liquid: Vee clamp: 10 bar g  
 Bolted: FV / 10 bar g  
 Gas: Vee clamp: 3 bar g  
 Bolted: FV / 3 bar g

Temperature Range: -10°C / 150°C

### Materials of Construction

Body: 316L St. Steel  
 Closure: Vee Clamp - 304 St. Steel  
 Bolts - Zinc plated carbon steel  
 (Optional stainless steel)

### Finish

Vessel: Electropolished

### Connections

Inlet/Outlet: 3" Flanged  
 Vent: Horizontal: 1/2" BSPM  
 Vertical: 1/4" BSP  
 Drains: 1/2" BSPM

Model	Dimensions (Nominal)					Volume (Litres)	Dry Weight (Kg)
	A	B	C	D	E		
66012CAC30C1EE	983	787	181	200	500	27.4	34.4
66014CAC30C1EE	1498	1302	181	200	1000	43.5	41.9
66016CAI30C1EE	1998	1802	181	200	1500	59.1	41.5
66016CAI30C1EE	2006	1810	181	200	1500	59.1	49.3

### PED Status

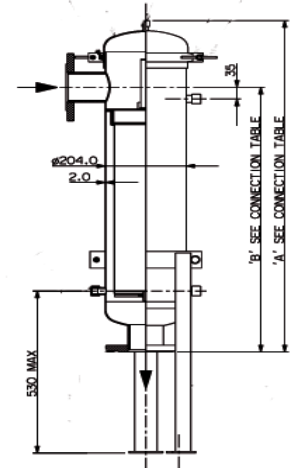
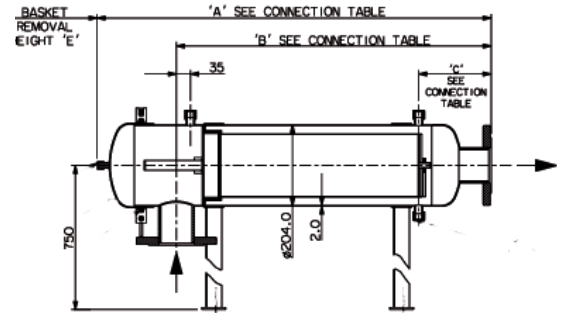
Fluid Groups: Compliant with 97/23/EC  
 Liquids Group 1 + 2  
 Gas Group 2

Marking: CE

Exceptions: Group 1 liquids - Explosive

**ATEX:**

Compliant 94/9/EC, level CE Ex II 2 GD c X



## AMAZON FILTERS LTD.

ALBANY PARK ESTATE, FRIMLEY ROAD,  
 CAMBERLEY, SURREY, GU16 7PG  
 ENGLAND

Tel: +44 (0) 1276 670 600

Fax: +44 (0) 1276 670 101

Email: sales@amazonfilters.co.uk

Web: www.amazonfilters.com



Certificate No. FM39584

Distributed by: